

DESCRIPTION:

AMC MODEL SWN-2181-TRA OPTION AL1W IS A TRANSFER SWITCH MODULE WITH LOW INSERTION LOSS, HIGH ISOLATION AND WITH INTEGRAL TTL DRIVER IN A SMALL 1.0" x 1.0" x 0.5" PACKAGE, DESIGNED FOR 0.5 GHz TO 18 GHz OPERATION.

SPECIFICATIONS:

- FREQUENCY: 0.5 GHz TO 18 GHz
- INSERTION LOSS: 3.5 dB MAX. @ 18 GHz
- ISOLATION: 0.5 GHz TO 18 GHz: 60 dB MINIMUM
- VSWR: IN/OUT: 2.0:1
- SPEED: DELAY ON: 75ns TYPICAL, 100ns MAX.
 DELAY OFF: 75ns TYPICAL, 100ns MAX.
- OPERATING POWER INPUT: +30 dBm (1 WATT) 75 W PEAK (1 u sec PULSE WIDTH)
- SURVIVAL POWER: +33 dBm, 100 W PEAK (1 usec PULSE WIDTH)
- POWER SUPPLY: +5V @ 100 mA MAXIMUM
 -5V @ 100 mA MAXIMUM
- CONTROL: SEE TABLE I
- SIZE: 1.00 (L) x 1.00 (W) x 0.50 (H)
- WEIGHT: 1.5 OUNCES TYPICAL

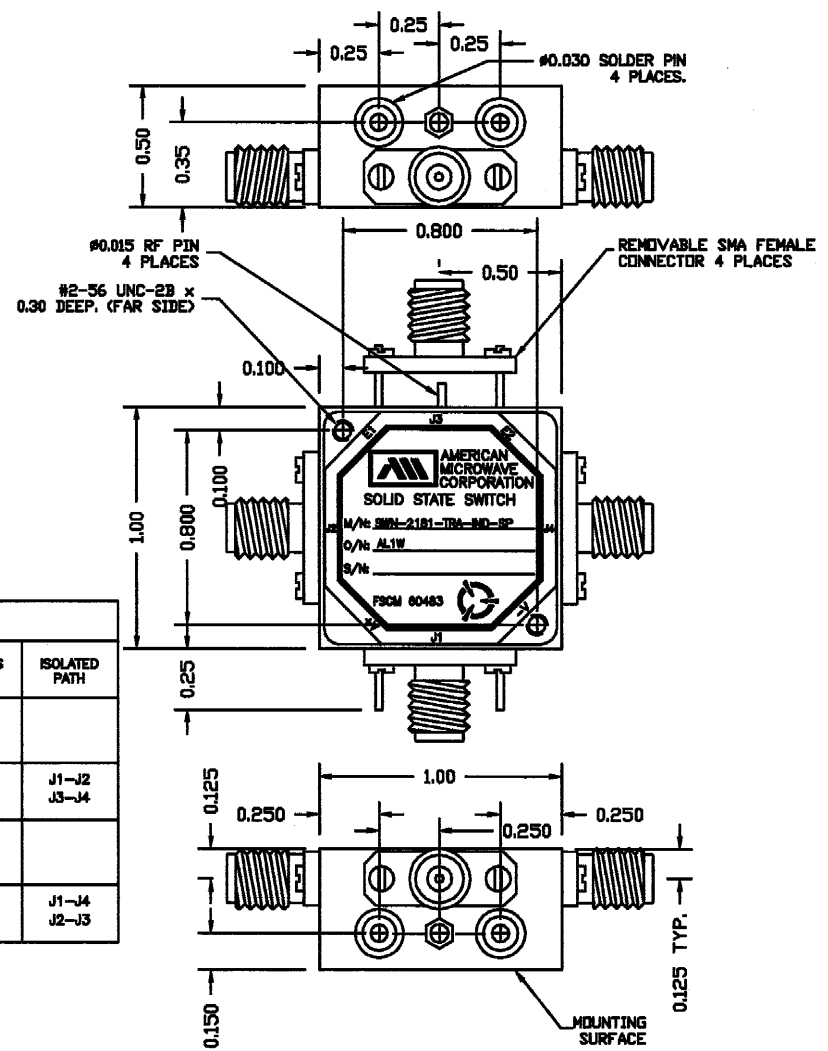
OPTIONS:

SINGLE CONTROL WITH SOLDER PIN STANDARD

- IND-SP INDEPENDANT CONTROL WITH SOLDER PIN
- 10M18 10 MHz TO 18 GHz (INSERTION LOSS INCREASES BY 1.5db AT 10 MHz AND 0.5db AT 18 GHz)
- 100M18 100 MHz TO 18 GHz (INSERTION LOSS INCREASES BY 1.5db AT 100 MHz AND 0.5db AT 18 GHz)
- 118 1 GHz TO 18 GHz (NO CHANGE IN INSERTION LOSS)
- 218 2 GHz TO 18 GHz (NO CHANGE IN INSERTION LOSS)
- 412 4 GHz TO 12.4 GHz (NO CHANGE IN INSERTION LOSS)
- 618 6 GHz TO 18 GHz (NO CHANGE IN INSERTION LOSS)
- 1218 12 GHz TO 18 GHz (NO CHANGE IN INSERTION LOSS)
- 100M20 100 MHz TO 20 GHz (INSERTION LOSS INCREASES BY 1.5db AT 100 MHz AND 1.0db AT 20 GHz)
- 220 2 GHz TO 20 GHz (INSERTION LOSS INCREASES BY 1.0db AT 20 GHz)
- 1020 10 GHz TO 20 GHz (INSERTION LOSS INCREASES BY 1.0db AT 20 GHz)
- B01 -12V POWER SUPPLIES
- B02 -15V POWER SUPPLIES
- B03 REVERSE LOGIC
- B05 HIGH SPEED, TURNON/TURNOFF 20 nsec MAXIMUM WHEN APPLICABLE OR OPTION HS
- B06 HIGH POWER - SPECIFY CW POWER, PEAK POWER, PULSE WIDTH, DUTY CYCLE, RF FREQUENCY AND BANDWIDTH
- B07 CUSTOM DESIGNED PRODUCT- SPECIFY INITIALS OF CUSTOMER
- B08 LOW VIDEO TRANSIENTS - SPECIFY VIDEO BANDWIDTH
- B09 LOW INSERTION LOSS VERSION
- B10 HIGHER ISOLATION VERSION

CTL	TTL LOGIC	LOW LOSS PATH	ISOLATED PATH
E1	0	J1-J2 J3-J4	
	1		J1-J2 J3-J4
E2	0	J1-J4 J2-J3	
	1		J1-J4 J2-J3

REVISIONS				
ZONE	REV.	DESCRIPTION	DATE	APPROVED
-	-	ORIGINAL RELEASE	7/1/99	



M/N = MODEL NUMBER
 O/N = OPTION NUMBER
 S/N = SERIAL NUMBER

ENVIRONMENTAL RATINGS:

- TEMPERATURE: -55°C TO +85°C (OPERATING)
 -65°C TO +125°C (STORAGE)
- HUMIDITY: MIL-STD-202F, METHOD 103B COND. B
- SHOCK: MIL-STD-202F, METHOD 213B COND. B
- VIBRATION: MIL-STD-202F, METHOD 204D COND. B
- ALTITUDE: MIL-STD-202F, METHOD 105C COND. B
- TEMPERATURE CYCLE: MIL-STD-202F, METHOD 107D COND. A

ALL DIMENSIONS ARE IN INCHES
 TOLERANCES:
 X.XX ±0.020
 X.XXX ±0.010

NOTE: THE ABOVE SPECIFICATIONS ARE SUBJECT TO CHANGE OR REVISION

CONTRACT NO.		AMERICAN MICROWAVE CORPORATION FREDERICK, MARYLAND	
APPROVALS	DATE	TITLE	
DRAWN WSP	7/1/99	OUTLINE DRAWING SWN-2181-TRA-IND-SP OPTION AL1W TRANSFER SWITCH	
CHECKED		SIZE	REV.
ISSUED		A 60483	-
		DWG NO.	
		100-4708-6	
		SCALE N/S	SHEET 1 of 1